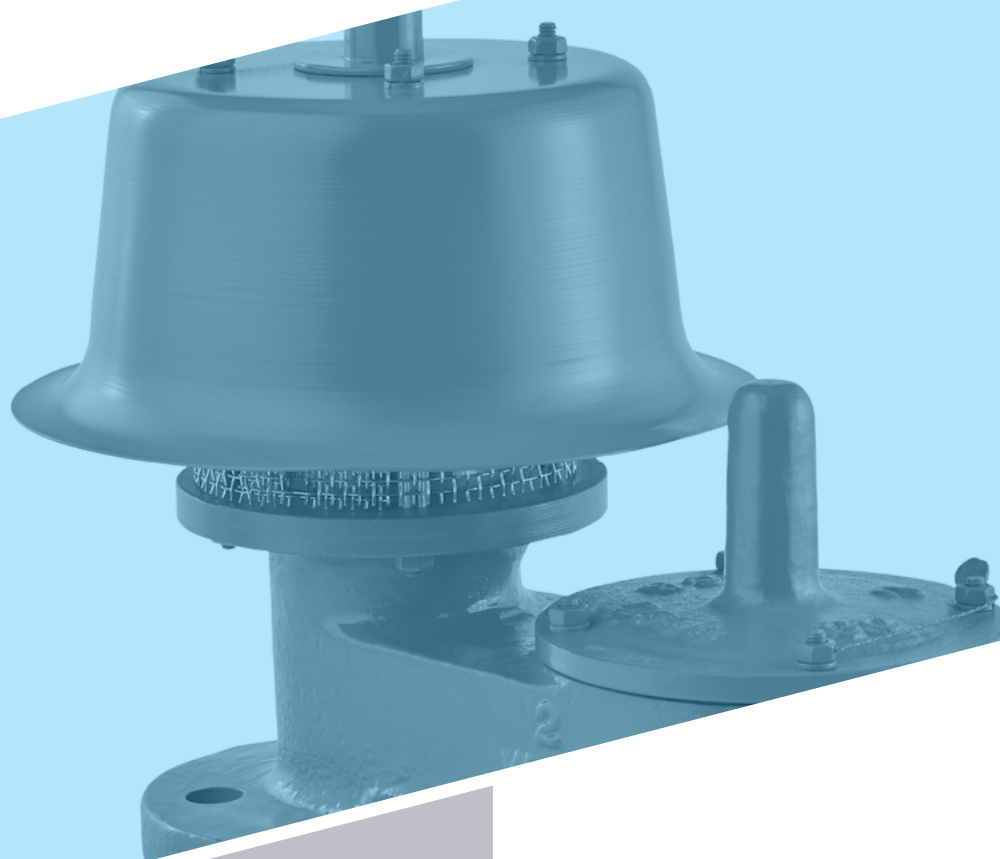




PRESSURE/VACUUM RELIEF VALVES

1200 SERIES



Representante Oficial
Tel: +54 11 4932-2322
Email: ventas@cvcontrol.com.ar
www.cvcontrol.com.ar

1200 SERIES

The Groth 1200 Series Pressure/Vacuum Relief Valves are designed to protect your tank from damage created by overpressure or excessive vacuum. Costly product evaporation losses due to normal tank “breathing” are greatly reduced. Because the 1200 Series products retain toxic vapors, atmospheric contamination is minimized which helps to provide increased fire protection and safety.

Technical Details

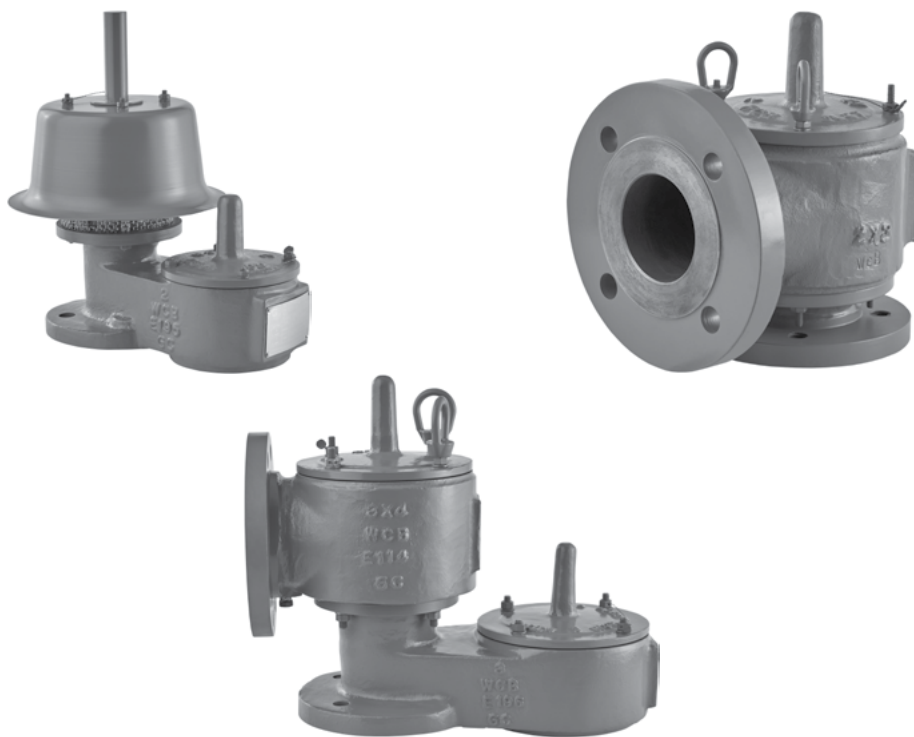
- Sizes: 2” (DN 50) through 12” (DN 300)
- Pressure Settings: 0.5 oz/in2 to 15 psig (2.15 mbarg to 1.03 barg)
- Vacuum Settings: 0.5 oz/in2 to 12 psig (2.15 mbarg to 506 mbarg)
- Material: Aluminum, Carbon Steel, Stainless Steel, Fiberglass, special materials available upon request

Features

- Modular Construction
- Cushioned air seating
- Superior performing fluoropolymer diaphragms
- Self draining housing body and drip rings
- Peripheral Guiding and center stabilizing system for alignment
- PED and ATEX Certified

Options

- Buna-N, FKM
- Steam Jacket Valve



Representante Oficial
Tel: +54 11 4932-2322
Email: ventas@cvcontrol.com.ar
www.cvcontrol.com.ar

GROTHCORP.COM